



"دليل الجودة والتميز" "Guide to Quality and Excellence"

"في كويت جورمية، نلتزم بتقديم قيمة حقيقية ومستدامة لشركائنا، من خلال توفير أجود المواد الأولية والحفاظ على معايير التميز التي تلي تطلعات محترفي صناعة الحلويات والمخبوزات."

"At Kuwait Gourmet, we are committed to delivering real and sustainable value to our partners, by providing the finest raw materials and maintaining standards of excellence that meet the aspirations of confectionery and bakery professionals."

Kuwait Gourmet Co.

www.kuwaitgourmet.com



Welcome to
the year of
the dragon





كويت جورمييه
kuwait Gourmet

Shop Your Favourite

Cargill[®]



BRAUN


veliche
GOURMET
BELGIAN CHOCOLATE

K
BELGIUM


AGRANO


LEMAN
DECORATIONS

Authentic
Vanilla Products



Gold Chef


Martellato


kee

Lesepeidado
POWERING FOOD DECORATION

Vormh
SILICONE MOLDS

Chocolate World[®]

المكتب الرئيسي - Head Office

Kuwait City, Salhiya Complex - Enter-5, Level 1 Office 116E

مدينة الكويت - مجمع الصالحيه - مدخل 5 - الدور الاول - مكتب E 116

تليفون: 50403020

Email: m.awad@kuwaitgourmet.com

www.kuwaitgourmet.com

شركة كويت جورمية

kuwait Gourmet Company

لتجارة الجملة والتجزئة ومكاتب التصدير والإستيراد

For Wholesale and Retail Trade And Export and Import Offices

المعرض - Showroom

Shuwaikh Industrial Area 3 - Block D - Street 62 - Plot 40

الشويخ الصناعية ٣ - قطعة د - شارع ٦٢ - قسيمة ٤٠

تليفون: 55331620

Email: info@kuwaitgourmet.com

www.store.kuwaitgourmet.com



Intense 35%



Inspiration 32%



Emotion 58%



Sensation 72%



Obsession 30%



Euphoria caramel



Delight 29%




veliche
GOURMET
BELGIAN CHOCOLATE



**High fat Cocoa Powder
22/24**



المكتب الرئيسي - Head Office

Kuwait City, Salhiya Complex - Enter-5, Level 1 Office 116E

مدينة الكويت - مجمع الصالحة - مدخل 5 - الدور الاول - مكتب E 116

تليفون: 50403020

Email: m.awad@kuwaitgourmet.com

www.kuwaitgourmet.com

شركة كويت جورمية

kuwait Gourmet Company

لتجارة الجملة والتجزئة ومكاتب التصدير والإستيراد

For Wholesale and Retail Trade And Export and Import Offices

المعرض - Showroom

Shuwaikh Industrial Area 3 - Block D - Street 62 - Plot 40

الشويخ الصناعية ٣ - قطعة د - شارع ٦٢ - قسيمة ٤٠

تليفون: 55331620

Email: info@kuwaitgourmet.com

www.store.kuwaitgourmet.com



Hazelnut Praliné 65%

The golden brown coloured paste with a delicious nutty taste has a smooth, silky texture that makes it easy to work with. What's more,

Hazelnut Praliné 65%
5 KG

Deodorized Cocoa Butter

Sustainable cocoa butter with neutral taste and fragrance
3 KG



Rice Crunchies

Veliche Rice Crunchies are your gateway to the hottest trend of playing with textures in chocolate and pastry creations. Made with 100% rice flour
3 KG



veliche
GOURMET
BELGIAN CHOCOLATE

المكتب الرئيسي - Head Office

Kuwait City, Salihiya Complex - Enter-5, Level 1 Office 116E

مدينة الكويت - مجمع الصالحية - مدخل 5 - الدور الاول - مكتب E 116

تليفون: 50403020

Email: m.awad@kuwaitgourmet.com

www.kuwaitgourmet.com

شركة كويت جورمية

kuwait Gourmet Company

لتجارة الجملة والتجزئة ومكاتب التصدير والإستيراد

For Wholesale and Retail Trade And Export and Import Offices

المعرض - Showroom

Shuwaikh Industrial Area 3 - Block D - Street 62 - Plot 40

الشويخ الصناعية ٣ - قطعة د - شارع ٦٢ - قسيمة ٤٠

تليفون: 55331620

Email: info@kuwaitgourmet.com

www.store.kuwaitgourmet.com



**50% Praline . Almo- Haze
1 KG**



**70% Praline . Popcorn Caramel
1 KG**



**50% Praline . Pecan
Roasted 1 KG**



**50% Praline . Hazelnut
1 KG**



**50% Praline . Pistachio
1 KG**



**100% Pure Paste . Pistachio
1 KG**



**43% Gianduja .Dark
1 KG**



**38% Gianduja .Milk
1 KG**

المكتب الرئيسي - Head Office

Kuwait City, Salhiya Complex - Enter-5, Level 1 Office 116E

مدينة الكويت - مجمع الصاحبة - مدخل 5- الدور الاول - مكتب E 116

تليفون: 50403020

Email: m.awad@kuwaitgourmet.com

www.kuwaitgourmet.com

شركة كويت جورمية

kuwait Gourmet Company

لتجارة الجملة والتجزئة ومكاتب التصدير والإستيراد

For Wholesale and Retail Trade And Export and Import Offices

المعرض - Showroom

Shuwaikh Industrial Area 3 - Block D- Street 62 - Plot 40

الشويخ الصناعية ٣ - قطعة د - شارع ٦٢ - قسيمة ٤٠

تليفون: 55331620

Email: info@kuwaitgourmet.com

www.store.kuwaitgourmet.com

Authentic
Made In France Products



Vanilla



**BOURBON VANILLA BEANS
EXTRACT WITH SEEDS**

**BOURBON VANILLA
BEANS MADAGASCAR**



**BOURBON MADAGASCAR
VANILLA PASTE**

المكتب الرئيسي - Head Office

Kuwait City, Salhiya Complex - Enter-5, Level 1 Office 116E

مدينة الكويت - مجمع الصالحة - مدخل 5 - الدور الاول - مكتب E 116

تليفون: 50403020

Email: m.awad@kuwaitgourmet.com

www.kuwaitgourmet.com

شركة كويت جورمية

kuwait Gourmet Company

لتجارة الجملة والتجزئة ومكاتب التصدير والإستيراد

For Wholesale and Retail Trade And Export and Import Offices

المعرض - Showroom

Shuwaikh Industrial Area 3 - Block D - Street 62 - Plot 40

الشويخ الصناعية ٣ - قطعة د - شارع ٦٢ - قسيمة ٤٠

تليفون: 55331620

Email: info@kuwaitgourmet.com

www.store.kuwaitgourmet.com



Kranfil's Mocca



Ready and easy to use: straight from the bucket. crunchy filling with roasted coffee powder and 20 % biscuits in flakes.

No preservatives. suitable for vegetarians. Halal Certified
3 KG

Kranfil's Red Fruits

Crunchy filling with 30% white chocolate, dried raspberries, strawberries and blueberries and 20% biscuit pieces, without palm oil. To fill truffles and pralines.

3 KG



Kranfil's Caramel



Crunchy filling with 20% biscuits in flakes and a pinch of sea salt "Sel de Guerande". To fill truffles and pralines, put a crunchy layer on sponges and pound cakes.

3 KG

Kranfil's Strawberry Cheesecake

Trend flavor strawberry cheesecake

Made with 15% short biscuit pieces, 7.5% mascarpone powder & dried strawberries

Ready and easy to use: straight from the bucket

Without palm, no preservatives. suitable for vegetarians. Halal Certified

3 KG



BRAUN

المكتب الرئيسي - Head Office

Kuwait City, Salhiya Complex - Enter-5, Level 1 Office 116E

مدينة الكويت - مجمع الصالحية - مدخل 5 - الدور الاول - مكتب E 116

تليفون: 50403020

Email: m.awad@kuwaitgourmet.com

www.kuwaitgourmet.com

شركة كويت جورمية

kuwait Gourmet Company

لتجارة الجملة والتجزئة ومكاتب التصدير والإستيراد

For Wholesale and Retail Trade And Export and Import Offices

المعرض - Showroom

Shuwaikh Industrial Area 3 - Block D - Street 62 - Plot 40

الشويخ الصناعية ٣ - قطعة د - شارع ٦٢ - قسيمة ٤٠

تليفون: 55331620

Email: info@kuwaitgourmet.com

www.store.kuwaitgourmet.com



Kranfil's Coconut & Almonds



Ready and easy to use: straight from the bucket, crunchy filling with 10% roasted Almonds, 5% desiccated coconuts and 20 % biscuits in flakes.

Only natural flavouring, no preservatives, suitable for vegetarians. Halal Certified, endless applications: for filling, covering, marbling or individual chocolate delights

3 KG

Kranfil's Pistachio

Crunchy filling with 20% biscuits in flakes and 12% roasted pistachios. To fill truffles and pralines, put a crunchy layer on sponges and pound cakes, create special desserts and mousses, fill everything else.

3 KG



Kranfil's Caramel Cookie & Almonds

Crunchy caramel filling with caramel cookies and almonds. To fill truffles and pralines, put a crunchy layer on sponges and pound cakes, create special desserts and mousses, fill everything else.

3 KG



Kranfil's Passion Fruit Mango

Crunchy filling with dried passion fruit juice and dried mango puree, plus 20% biscuit pieces. The filling can be processed immediately.

Free from preservatives

Vegetarian

Endless application possibilities



BRAUN



المكتب الرئيسي - Head Office

Kuwait City, Salhiya Complex - Enter-5, Level 1 Office 116E

مدينة الكويت - مجمع الصالحية - مدخل 5 - الدور الاول - مكتب E 116

تليفون: 50403020

Email: m.awad@kuwaitgourmet.com

www.kuwaitgourmet.com

شركة كويت جورمية

kuwait Gourmet Company

لتجارة الجملة والتجزئة ومكاتب التصدير والإستيراد

For Wholesale and Retail Trade And Export and Import Offices

المعرض - Showroom

Shuwaikh Industrial Area 3 - Block D - Street 62 - Plot 40

الشويخ الصناعية ٣ - قطعة د - شارع ٦٢ - قسيمة ٤٠

تليفون: 55331620

Email: info@kuwaitgourmet.com

www.store.kuwaitgourmet.com



Kranfil's White Chocolate

Crunchy filling with 20% white chocolate and 20% cookie pieces.

The filling can be processed directly.

Free from preservatives

Vegetarian

Endless application possibilities

Schokobella Coffee

Ready-to-use cream filling with roasted coffee flavor. For filling, garnishing, or coating pastries, cream and whipped cream cakes, and desserts.

The filling can be processed immediately.

3 KG



Schokobella Strawberry

Ready and easy to use: straight from the bucket

Fine mouth feeling: smooth structure and fruity strawberry taste

Only natural flavours and colouring food

Without palm

Endless applications: can be whipped with dairy components like cream, quark, yoghurt, sour cream, cream cheese and mascarpone

3 KG

Bellanossa

A combination of tender melting nougat cream and crunchy cocoa bean nibs make of Bellanossa a sensational taste experience! Exquisite ingredients such as gently roasted hazelnuts and carefully selected cocoa powder make this delicious novelty complete. Bellanossa is ideal for coating and filling pastries and pralines. The attractive cocoa bean nibs make it a real eye catcher.

6 KG



Head Office - المكتب الرئيسي

Kuwait City, Salhiya Complex - Enter-5, Level 1 Office 116E

مدينة الكويت - مجمع الصالحيه - مدخل 5 - الدور الاول - مكتب 116 E

تليفون: 50403020

Email: m.awad@kuwaitgourmet.com

www.kuwaitgourmet.com

شركة كويت جورمية

kuwait Gourmet Company

لتجارة الجملة والتجزئة ومكاتب التصدير والإستيراد

For Wholesale and Retail Trade And Export and Import Offices

المعرض - Showroom

Shuwaikh Industrial Area 3 - Block D- Street 62 - Plot 40

الشويخ الصناعية ٣ - قطعة د - شارع ٦٢ - قسيمة ٤٠

تليفون: 55331620

Email: info@kuwaitgourmet.com

www.store.kuwaitgourmet.com



Schokobella Lime

Ready and easy to use: straight from the bucket
Fine mouth feeling: smooth structure and fruity lime taste
Only natural flavours and colouring food
Endless applications: can be whipped with dairy components like cream, quark, yoghurt, sour cream, cream cheese and mascarpone
6 KG

Schokobella Yoghurt

Ready and easy to use: straight from the bucket
Fine mouth feeling: smooth structure and typical yoghurt taste with a slight sour shade
Made with 15 % skimmed milk yoghurt powder
Without palm
6 KG



Schokobella Mango

Ready and easy to use: straight from the bucket
Fine mouth feeling: smooth structure and fruity mango taste
Only natural flavours and colouring food
Endless applications: can be whipped with dairy components like cream, quark, yoghurt, sour cream, cream cheese and mascarpone



Schokobella Peanut & Caramel

Ready and easy to use: straight from the bucket
Worldwide trendy treat in pastry application
Fine mouth feeling: smooth structure and delicious taste.
Product without the peanut allergen!
Endless applications: can be whipped with dairy components like cream, quark, yoghurt, sour cream, cream cheese and mascarpone
6 KG



BRAUN

المكتب الرئيسي - Head Office

Kuwait City, Salhiya Complex - Enter-5, Level 1 Office 116E

مدينة الكويت - مجمع الصالحة - مدخل 5 - الدور الاول - مكتب E 116

تليفون: 50403020

Email: m.awad@kuwaitgourmet.com

www.kuwaitgourmet.com

شركة كويت جورمية

kuwait Gourmet Company

لتجارة الجملة والتجزئة ومكاتب التصدير والإستيراد

For Wholesale and Retail Trade And Export and Import Offices

المعرض - Showroom

Shuwaikh Industrial Area 3 - Block D - Street 62 - Plot 40

الشويخ الصناعية ٣ - قطعة د - شارع ٦٢ - قسيمة ٤٠

تليفون: 55331620

Email: info@kuwaitgourmet.com

www.store.kuwaitgourmet.com



Bianka

Filling and garnishing cream
Base cream for making cream fillings. For
filling and garnishing cream cakes

10KG

Crema Nocciola Maestro

Nutella, with its luxurious ingredients of 12% hazelnuts and 6% fat-free cocoa, features a natural hazelnut chocolate taste and flavor.

12 KG



Spalmella Pistacchio

Ready-to-use cream filling with pistachios. Perfect for filling pastries and pralines.

Advantages:
Vegetarian

Flavoured exclusively with natural flavours

7 KG

Schokobella Blueberry

Ready-to-use cream filling with natural blueberry flavor.

For filling, garnishing, or coating pastries, cream and whipped cream cakes, and desserts.

The filling can be processed immediately.

6 KG



BRAUN

المكتب الرئيسي - Head Office

Kuwait City, Salhiya Complex - Enter-5, Level 1 Office 116E

مدينة الكويت - مجمع الصالحيه - مدخل 5 - الدور الاول - مكتب E 116

تليفون: 50403020

Email: m.awad@kuwaitgourmet.com

www.kuwaitgourmet.com

شركة كويت جورمية

kuwait Gourmet Company

لتجارة الجملة والتجزئة ومكاتب التصدير والإستيراد

For Wholesale and Retail Trade And Export and Import Offices

المعرض - Showroom

Shuwaikh Industrial Area 3 - Block D - Street 62 - Plot 40

الشويخ الصناعية ٣ - قطعة د - شارع ٦٢ - قسيمة ٤٠

تليفون: 55331620

Email: info@kuwaitgourmet.com

www.store.kuwaitgourmet.com



Cristaline Neutral

100% gloss gel for direct application
High level of convenience
To be processed directly
Very good spreadability
4 KG



Cristaline Caramel

100% gloss gel for direct application
6.5% caramel
Acid-resistant and frost-resistant
Very good spreadability
To be processed directly
4 KG



Cristaline Red

100% gloss gel for direct application.
With 20% strawberry puree
Acid-resistant and frost-resistant
Very good spreadability
To be processed directly
4 KG



Cristaline Chocolate

100% gloss gel for direct application
With 5% cocoa content
Acid-resistant and frost-resistant
Very good spreadability
To be processed directly
4 KG



Head Office - المكتب الرئيسي

Kuwait City, Salhiya Complex - Enter-5, Level 1 Office 116E

مدينة الكويت - مجمع الصالحية - مدخل 5 - الدور الاول - مكتب E 116

تليفون: 50403020

Email: m.awad@kuwaitgourmet.com

www.kuwaitgourmet.com

شركة كويت جورمية

kuwait Gourmet Company

لتجارة الجملة والتجزئة ومكاتب التصدير والإستيراد

For Wholesale and Retail Trade And Export and Import Offices

المعرض - Showroom

Shuwaikh Industrial Area 3 - Block D - Street 62 - Plot 40

الشويخ الصناعية ٣ - قطعة د - شارع ٦٢ - قسيمة ٤٠

تليفون: 55331620

Email: info@kuwaitgourmet.com

www.store.kuwaitgourmet.com



Bon Caramel

A delicate cream with a caramel flavor.
Ideal for pastries, desserts,
or fillings. Bake-stable and freezer-stable.
Ready to process
RSPO SG Certified
Typical caramel flavor
4 KG

Bon Vanille

A delicate vanilla-flavored cream. Ideal
for pastries, desserts, or fillings.
Bake-stable and freezer-stable.
4 KG



Hazelnut-nougat cream

Ready-to-use hazelnut-nougat cream with nut pieces
for nougat cream fillings. For cakes, slices, desserts,
and cookies. By adding egg and breadcrumbs, it can also
be used as a bake-stable filling for sheet cakes.
With 27% roasted hazelnuts
To be processed directly
6 KG



Aroma Vanilla Combani

An essential ingredient for all your delicious
creations! This vanilla flavor will transform
your ordinary desserts into true masterpieces.
Imagine a cake bursting with vanilla, capable of
delighting all your senses.
1 KG



Head Office - المكتب الرئيسي

Kuwait City, Salihiya Complex - Enter-5, Level 1 Office 116E

مدينة الكويت - مجمع الصالحية - مدخل 5 - الدور الاول - مكتب 116 E

تليفون: 50403020

Email: m.awad@kuwaitgourmet.com

www.kuwaitgourmet.com

شركة كويت جورمية

kuwait Gourmet Company

لتجارة الجملة والتجزئة ومكاتب التصدير والإستيراد

For Wholesale and Retail Trade And Export and Import Offices

المعرض - Showroom

Shuwaikh Industrial Area 3 - Block D- Street 62 - Plot 40

الشويخ الصناعية ٣ - قطعة د - شارع ٦٢ - قسيمة ٤٠

تليفون: 55331620

Email: info@kuwaitgourmet.com

www.store.kuwaitgourmet.com

Bisquit 100 PLUS sponge vanilla

Powdered baking powder for making sponge cake, Viennese sponge cake, nut cake, and chocolate sponge

- Long shelf life
- Moist and tender crumb
- Particularly open crumb structure
- Very good sliceability

25 KG



Chocolate biscuits 100 sponge chocolate

Versatile fine baking powder, suitable for cake bases, roulades and capsules.

Long shelf life

- Moist and tender crumb
- Particularly open crumb structure
- Very good sliceability

15 KG



AGRANO Apollo Soft & Fresh 1% Multi-purpose improver

Kvaliteediparandaja kõikidele nisu- ja segajahust pagaritoodetele. Tagab erakordselt pehme sisu. Doseering 1%

20 KG



Head Office - المكتب الرئيسي

Kuwait City, Salhiya Complex - Enter-5, Level 1 Office 116E

116 E مدينة الكويت - مجمع الصالحيه - مدخل 5- الدور الاول - مكتب

تليفون: 50403020

Email: m.awad@kuwaitgourmet.com

www.kuwaitgourmet.com

شركة كويت جورمية

kuwait Gourmet Company

لتجارة الجملة والتجزئة ومكاتب التصدير والإستيراد

For Wholesale and Retail Trade And Export and Import Offices

المعرض - Showroom

Shuwaikh Industrial Area 3 - Block D- Street 62 - Plot 40

الشويخ الصناعية ٣ - قطعة د - شارع ٦٢ - قسيمة ٤٠

تليفون: 55331620

Email: info@kuwaitgourmet.com

www.store.kuwaitgourmet.com



Basic mix à la crème brûlée

Excellent taste thanks to ground vanilla beans
 Exclusively natural flavors
 Creamy texture
 Cut and frost resistant
 Can be combined with Braun dessert pastes
 1 KG

Creme Caramel

your secret to effortless dessert perfection. With its creamy texture and rich caramel flavor, this mix delivers a classic treat with every spoonful. Perfect for busy kitchens or home bakers seeking convenience without compromising on taste.

1 KG



Floretine Bienex

Powdered bee sting and Florentine base. For bee sting cakes, Florentines, coconut and almond slices, and nutcrackers.
 20 x 0.6 kg in a carton



Frio Cold Custard

Frio is a powdered baking mix with fine custard flavour. It is cold soluble and freeze-stable. Mainly used as a filling, but also can be used in tortes, desserts, puff, choux, and Danish pastries.

15 KG



Head Office - المكتب الرئيسي

Kuwait City, Salhiya Complex - Enter-5, Level 1 Office 116E

مدينة الكويت - مجمع الصالحيه - مدخل 5 - الدور الاول - مكتب 116 E

تليفون: 50403020

Email: m.awad@kuwaitgourmet.com

www.kuwaitgourmet.com

شركة كويت جورمية

kuwait Gourmet Company

لتجارة الجملة والتجزئة ومكاتب التصدير والاستيراد

For Wholesale and Retail Trade And Export and Import Offices

المعرض - Showroom

Shuwaikh Industrial Area 3 - Block D - Street 62 - Plot 40

الشويخ الصناعية ٣ - قطعة د - شارع ٦٢ - قسيمة ٤٠

تليفون: 55331620

Email: info@kuwaitgourmet.com

www.store.kuwaitgourmet.com

Metal Powder Top Decoration



pearl gold



pearl silver



pearl cherry red



pearl copper



pearl red



pearl bronze

المكتب الرئيسي - Head Office

Kuwait City, Salhiya Complex - Enter-5, Level 1 Office 116E

مدينة الكويت - مجمع الصالحيه - مدخل 5 - الدور الاول - مكتب 116E

تليفون: 50403020

Email: m.awad@kuwaitgourmet.com

www.kuwaitgourmet.com

شركة كويت جورمية

kuwait Gourmet Company

لتجارة الجملة والتجزئة ومكاتب التصدير والإستيراد

For Wholesale and Retail Trade And Export and Import Offices

المعرض - Showroom

Shuwaikh Industrial Area 3 - Block D- Street 62 - Plot 40

الشويخ الصناعية 3 - قطعة د - شارع 62 - قسيمة 40

تليفون: 55331620

Email: info@kuwaitgourmet.com

www.store.kuwaitgourmet.com

Ready-to-use cocoa butter colors



Cocoa Butter white



Cocoa Butter Red



Cocoa Butter Orang



Cocoa Butter Silver



Cocoa Butter Yellow



Cocoa Butter Blue



Cocoa Butter Green



Cocoa Butter Bronze



Cocoa Butter Gold

المكتب الرئيسي - Head Office

Kuwait City, Salhiya Complex - Enter-5, Level 1 Office 116E

مدينة الكويت - مجمع الصالحية - مدخل 5 - الدور الاول - مكتب E 116

تليفون: 50403020

Email: m.awad@kuwaitgourmet.com

www.kuwaitgourmet.com

شركة كويت جورمية

kuwait Gourmet Company

لتجارة الجملة والتجزئة ومكاتب التصدير والإستيراد

For Wholesale and Retail Trade And Export and Import Offices

المعرض - Showroom

Shuwaikh Industrial Area 3 - Block D- Street 62 - Plot 40

الشويخ الصناعية ٣ - قطعة د - شارع ٦٢ - قسيمة ٤٠

تليفون: 55331620

Email: info@kuwaitgourmet.com

www.store.kuwaitgourmet.com



Edible ink cartridges PGI-450 / CLI-451 - Arabic model (TK160)



edible ink, specially developed for Canon printers, is perfect for professional edible printing. The cartridges meet the highest quality and safety standards. Each cartridge is filled in Germany with ink produced in-house to ensure reliable and consistent results.

Edible Ink in Bottles for Canon Printers

Outstanding print quality: Achieve sharp, vibrant prints on edible paper, Choco Sheets, and meringue sheets.

Extended shelf life: Unopened bottles are stable for up to 24 months from production date.



Choco Sheets®

A4

Choco Sheets® are the only transfer sheets on the market that use real cocoa butter, making them the ideal choice for professionals looking to create high-quality chocolate decorations. Whether you're adding a logo to chocolate candy or a photo to a petit four, Choco Sheets make it easy to transfer detailed and colorful designs to chocolate.

Wafer Paper Sheet

Wafer paper is a cost-effective, edible paper. It has a neutral taste and a lightly textured surface that allows for clear color reproduction. It can be easily printed using Canon inkjet printers.



المكتب الرئيسي - Head Office

Kuwait City, Salihiya Complex - Enter-5, Level 1 Office 116E

مدينة الكويت - مجمع الصالحيية - مدخل 5 - الدور الاول - مكتب E 116

تليفون: 50403020

Email: m.awad@kuwaitgourmet.com
www.kuwaitgourmet.com

شركة كويت جورمية

kuwait Gourmet Company

لتجارة الجملة والتجزئة ومكاتب التصدير والإستيراد

For Wholesale and Retail Trade And Export and Import Offices

المعرض - Showroom

Shuwaikh Industrial Area 3 - Block D - Street 62 - Plot 40

الشويخ الصناعية ٣ - قطعة د - شارع ٦٢ - قسيمة ٤٠

تليفون: 55331620

Email: info@kuwaitgourmet.com
www.store.kuwaitgourmet.com



Single guitar 3 frames

In the kit you will find

- 1 Base 600 x 400 h 100 mm;
- 3 Frames, cutting sizes: 22.5 - 30 - 45 mm;
- 1 Raplette;
- 1 Stainless steel plate;
- 1 Service kit.
- Made In Italy



Mini guitar - 22 mm

included in each package are: a stainless steel plate,
a plastic squeegee.

3 spare steel wires and 2 keys for attaching these.

Product size: 250 x 280 mm

Frame size: 22 mm

Made In Italy



Airbrush compressor - 6 BAR



The compressor generates 30-35 liters of air per minute at a maximum pressure of 6 BAR/95 PSI, thanks to a 1/3 HP power supply of 220-240V 50Hz (or 120V/60Hz or 220V/60Hz). The connection cable for the airbrush is included.

Power: 6 bar

30 - 35 L/min.

Pieces in the package: 1 pc

Infrared thermometer for chocolate

Digital infrared thermometer with LCD display. Operating range from -50°C (-58°F) to +420°C (+788°F).

Product size: 9 x 4 h 16 cm



المكتب الرئيسي - Head Office

Kuwait City, Salihiya Complex - Enter-5, Level 1 Office 116E

مدينة الكويت - مجمع الصالحية - مدخل 5 - الدور الاول - مكتب E 116

تليفون: 50403020

Email: m.awad@kuwaitgourmet.com

www.kuwaitgourmet.com

شركة كويت جورمية

kuwait Gourmet Company

لتجارة الجملة والتجزئة ومكاتب التصدير والإستيراد

For Wholesale and Retail Trade And Export and Import Offices

المعرض - Showroom

Shuwaikh Industrial Area 3 - Block D - Street 62 - Plot 40

الشويخ الصناعية ٣ - قطعة د - شارع ٦٢ - قسيمة ٤٠

تليفون: 55331620

Email: info@kuwaitgourmet.com

www.store.kuwaitgourmet.com

Kee Seal Ultra



Kee Seal Ultra comes with a textured ultra grip for optimal control and precision. Our double-seal and temperature-resistant technology provides the piping bags with exceptional durability, preventing bursts or tears even with thick, stiff, hot, or cold contents. Designed to withstand temperatures from -30°C to +110°C and to meet the highest hygiene standards. Kee Seal Ultra's exceptional precision and control makes it the ultimate piping bag for any culinary task.

أكياس التزيين مزودة بمقبض محكم الملمس لتوفير تحكم ودقة مثاليين. تضمن تقنية الإغلاق المزدوج ومقاومة الحرارة متانة استثنائية لهذه الأكياس، مما يمنع تمزقها أو انفجارها حتى مع المحتويات السميكة أو الصلبة أو الساخنة أو الباردة. صُممت هذه الأكياس لتحمل درجات حرارة تتراوح من 30 درجة مئوية إلى 110 درجة مئوية، ولتلبية أعلى معايير النظافة بفضل دقتها وتحكمها الاستثنائيين وتعد الخيار الأمثل لأي مهمة طهي

Made In Sweden



Piping bag Ultra 21"
Clear



Piping bag Ultra 12"
Clear



Piping bag Ultra 12"
Clear



Piping bag Ultra 21"
Clear

المكتب الرئيسي - Head Office

Kuwait City, Salhiya Complex - Enter-5, Level 1 Office 116E

مدينة الكويت - مجمع الصالحية - مدخل 5 - الدور الاول - مكتب E 116

تليفون: 50403020

Email: m.awad@kuwaitgourmet.com

www.kuwaitgourmet.com

شركة كويت جورمية

kuwait Gourmet Company

لتجارة الجملة والتجزئة ومكاتب التصدير والإستيراد

For Wholesale and Retail Trade And Export and Import Offices

المعرض - Showroom

Shuwaikh Industrial Area 3 - Block D - Street 62 - Plot 40

الشويخ الصناعية ٣ - قطعة د - شارع ٦٢ - قسيمة ٤٠

تليفون: 55331620

Email: info@kuwaitgourmet.com

www.store.kuwaitgourmet.com



Travel Cake

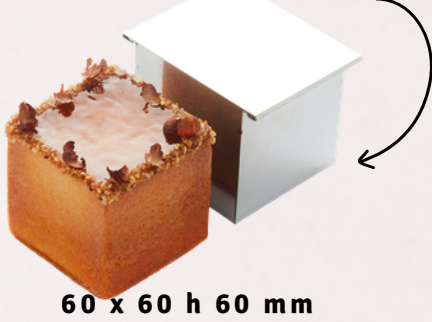
Fancy - Travel cake



Stainless steel molds for making Travel Cake with a modern twist. In some models the tubular insert, which can be easily removed after baking, allows for creative filling of cakes even with non-bakery fillings.

MADE IN ITALY

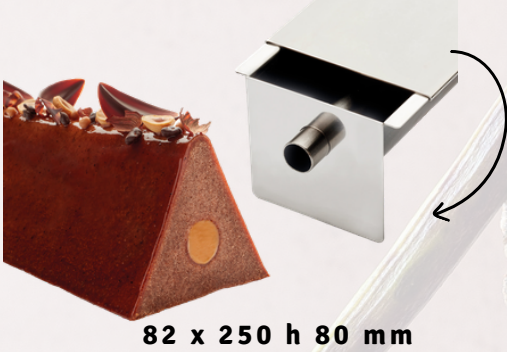
Mini Cubò - 6 x 6 cm



Carrè - 6 x 25 cm



Triangle - Travel cake



Block & Oval - 2 molds in 1



Round - Travel cake



Carré - 8 x 15 cm



Head Office - المكتب الرئيسي -

Kuwait City, Salihiya Complex - Enter-5, Level 1 Office 116E

مدينة الكويت - مجمع الصالحية - مدخل 5 - الدور الاول - مكتب E 116

تليفون: 50403020

Email: m.awad@kuwaitgourmet.com
www.kuwaitgourmet.com

شركة كويت جورمية

kuwait Gourmet Company

لتجارة الجملة والتجزئة ومكاتب التصدير والإستيراد

For Wholesale and Retail Trade And Export and Import Offices

المعرض - Showroom

Shuwaikh Industrial Area 3 - Block D- Street 62 - Plot 40

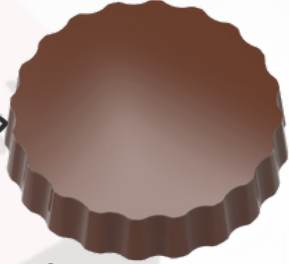
الشويخ الصناعية ٣ - قطعة د - شارع ٦٢ - قسيمة ٤٠

تليفون: 55331620

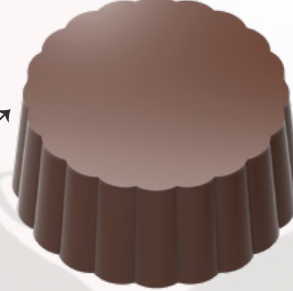
Email: info@kuwaitgourmet.com
www.store.kuwaitgourmet.com



MAGNETIC MOULDS FOR TRANSFERS



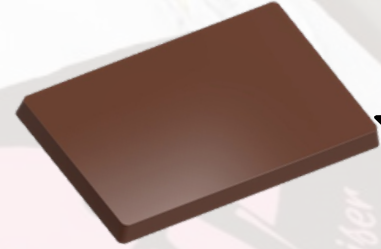
CW 1000L03
Magnetic Round 50 mm
Cavity weight 22 gm



CW 1000L04
Magnetic Round 32 mm
Cavity weight 13 gm



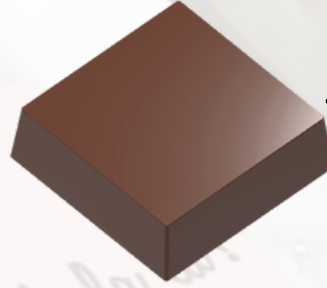
CW 1000L15
Magnetic Drop small 25*37 mm
Cavity weight 7 gm



MAGNETIC BUSINESS CARD
55*85 mm
Cavity weight 32 gm



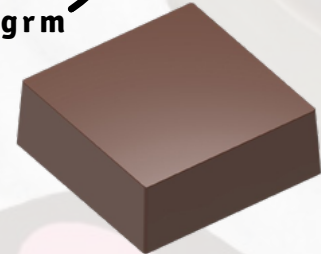
MAGNETIC ROUND 32mm
Cavity weight 7 gm



MAGNET SQUARE
29X29 mm
Cavity weight 9 gm



MAGNET Cube 23X23 mm
Cavity weight 12 gm



MAGNET SQUARE
30X30 mm
Cavity weight 11.5 gm

المكتب الرئيسي - Head Office

Kuwait City, Salhiya Complex - Enter-5, Level 1 Office 116E

مدينة الكويت - مجمع الصالحية - مدخل 5 - الدور الاول - مكتب E 116

تليفون: 50403020

Email: m.awad@kuwaitgourmet.com

www.kuwaitgourmet.com

شركة كويت جورمية

kuwait Gourmet Company

لتجارة الجملة والتجزئة ومكاتب التصدير والإستيراد

For Wholesale and Retail Trade And Export and Import Offices

المعرض - Showroom

Shuwaikh Industrial Area 3 - Block D - Street 62 - Plot 40

الشويخ الصناعية ٣ - قطعة د - شارع ٦٢ - قسيمة ٤٠

تليفون: 55331620

Email: info@kuwaitgourmet.com

www.store.kuwaitgourmet.com

Chocolate World®



CHOCOLATE MOULD BAR ROUND SNACK
CW 12036
Cavity 115X7X8 mm
Cavity Weight 6.5 grm

CHOCOLATE MOULD CHOPSTICKS
CW 1777
Cavity 258X10.5 mm
Cavity Weight 5.5 grm

CHOCOLATE MOULD BATON 'PAIN'
CW 12142
Cavity 80X13 mm
Cavity Weight 6 grm

CHOCOLATE MOULD BAR ROUND
CW 1916
Cavity 120X9.5 mm
Cavity Weight 5 grm

CW 2036
Cavity 64X15 mm
Cavity Weight 10 grm

CW 12059
Cavity 17.5X12 mm
Cavity Weight 1 grm



CW 12044
Cavity 125X110mm
Cavity Weight 100 grm

CW 12075
Cavity 34X30 mm
Cavity Weight 6 grm

المكتب الرئيسي - Head Office

Kuwait City, Salhiya Complex - Enter-5, Level 1 Office 116E

مدينة الكويت - مجمع الصالحية - مدخل 5 - الدور الاول - مكتب E 116

تليفون: 50403020

Email: m.awad@kuwaitgourmet.com

www.kuwaitgourmet.com

شركة كويت جورمية

kuwait Gourmet Company

لتجارة الجملة والتجزئة ومكاتب التصدير والإستيراد

For Wholesale and Retail Trade And Export and Import Offices

المعرض - Showroom

Shuwaikh Industrial Area 3 - Block D - Street 62 - Plot 40

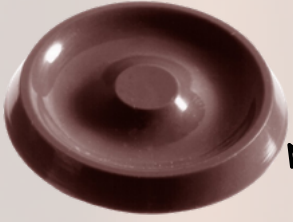
الشويخ الصناعية ٣ - قطعة د - شارع ٦٢ - قسيمة ٤٠

تليفون: 55331620

Email: info@kuwaitgourmet.com

www.store.kuwaitgourmet.com

Chocolate World®



CW 1413
Cavity 39 mm
Cavity Weight 7 grm



CW 1237
Cavity 51 mm
Cavity Weight 8 grm



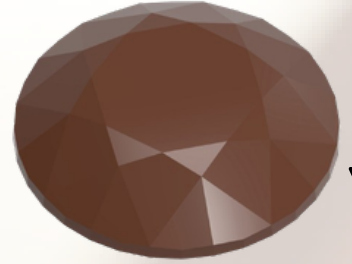
CW 1239
Cavity 59X31 mm
Cavity Weight 5 grm



CW 1638
Cavity 48X29 mm
Cavity Weight 9.8 grm



CW 1730
Cavity 33.5X18 mm
Cavity Weight 4 grm



CF 0244
Cavity 35 mm
Cavity Weight 6 grm



CW 1795
Cavity 25 mm
Cavity Weight 3.5 grm



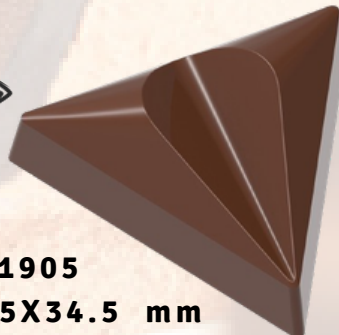
CW 1826
Cavity 37.5X34.5 mm
Cavity Weight 5 grm



CW 1847
Cavity 35 mm
Cavity Weight 6 grm



CW 1887
Cavity 30.52X30.52 mm
Cavity Weight 5.7 grm



CW 1905
Cavity 39.5X34.5 mm
Cavity Weight 6 grm



CW 1867
Cavity 25 mm
Cavity Weight 9.5 grm

المكتب الرئيسي - Head Office

Kuwait City, Salihiya Complex - Enter-5, Level 1 Office 116E

مدينة الكويت - مجمع الصالحية - مدخل 5 - الدور الاول - مكتب E 116

تليفون: 50403020

Email: m.awad@kuwaitgourmet.com

www.kuwaitgourmet.com

شركة كويت جورمية

kuwait Gourmet Company

لتجارة الجملة والتجزئة ومكاتب التصدير والإستيراد

For Wholesale and Retail Trade And Export and Import Offices

المعرض - Showroom

Shuwaikh Industrial Area 3 - Block D - Street 62 - Plot 40

الشويخ الصناعية ٣ - قطعة د - شارع ٦٢ - قسيمة ٤٠

تليفون: 55331620

Email: info@kuwaitgourmet.com

www.store.kuwaitgourmet.com

Chocolate World®



CW 1926-CW 2474
Cavity 30.5 mm
Cavity Weight 12 grm



CW 1967
Cavity 24.5 mm
Cavity Weight 5 grm



CW 1968
Cavity 24.5 mm
Cavity Weight 7.5 grm



CW 1760
Cavity 27 mm
Cavity Weight 8 grm



CF 0246
Cavity 45 mm
Cavity Weight 9.5 grm



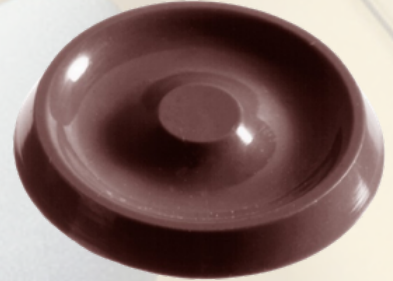
CF 0258
Cavity 28.5 mm
Cavity Weight 9.5 grm



CW 1984
Cavity 34.5 mm
Cavity Weight 9 grm



CW 1989
Cavity 30 mm
Cavity Weight 7.5 grm



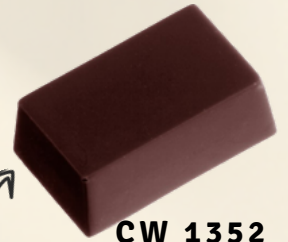
CW 2086
Cavity 36 mm
Cavity Weight 4 grm



CW 1419
Cavity 31X24 mm
Cavity Weight 10 grm



CW 1012
Cavity 39X34 mm
Cavity Weight 5.5 grm



CW 1352
Cavity 35X21 mm
Cavity Weight 10 grm

Head Office - المكتب الرئيسي - **CW 1935**
Kuwait City, Salihiya Complex - Ente Cavity 35X31 mm
116 E 50403020: تليفون
50403020: تليفون

شركة كويت جورمية
kuwait Gourmet Company
تجارة الجملة والتجزئة ومكاتب التصدير والاستيراد
Wholesale and Retail Trade And Export and Import Offices

Showroom - المعرض
Shuwaikh Industrial Area 3 - Block D- Street 62 - Plot 40
الشويخ الصناعية ٣ - قطعة د - شارع ٦٢ - قسيمة ٤٠
تليفون: 55331620
Email: info@kuwaitgourmet.com
www.store.kuwaitgourmet.com

Email: m.awad@kuwaitgourmet.com
www.kuwaitgourmet.com



CF 0261
Cavity 28.5 mm
Cavity Weight 9.5 gm



CF 0262
Cavity 29.5 mm
Cavity Weight 9.6 gm



CW12149
Cavity 28 mm
Cavity Weight 11 gm



CF 0260
Cavity 28 mm
Cavity Weight 9.5 gm



CF 0259
Cavity 29 mm
Cavity Weight 10 gm



CW12148
Cavity 29 mm
Cavity Weight 12 gm



CW12150
Cavity 35X31 mm
Cavity Weight 11 gm

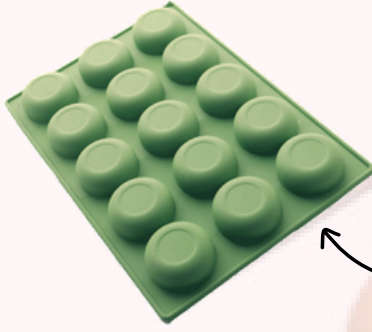


CW12150
Cavity 30 mm
Cavity Weight 12.5 gm

Vormh

SILICONE MOLDS

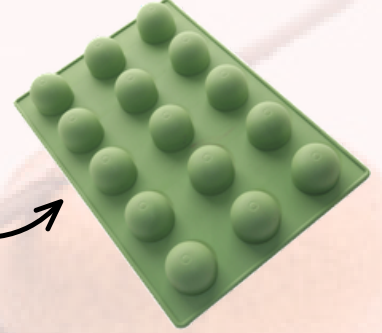
Silicon Mould



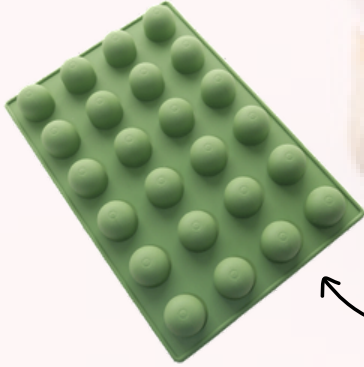
Planet Mini 12 stuks

Code: SV-006-V23

Sphere big 30mm



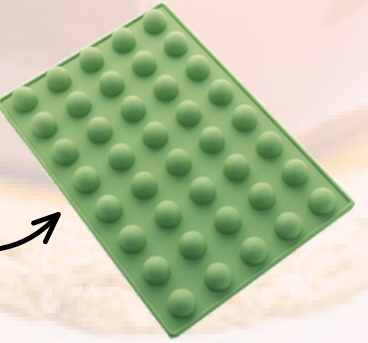
Code: SV-005-V23



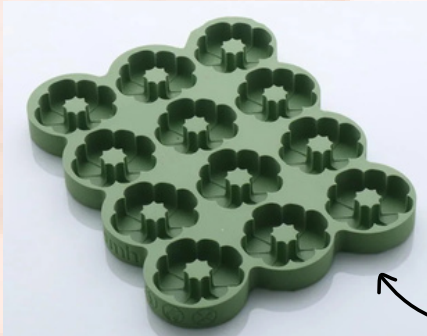
Sphere middle 25mm

Code: SV-004-V23

Sphere mini 15mm



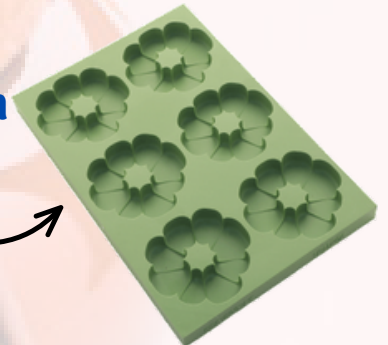
Code: SV-003-V23



Flower 12x50mm

Code: SV-030-V25

Flower 78 mm



Code: SV-002-V23

المكتب الرئيسي - Head Office

Kuwait City, Salhiya Complex - Enter-5, Level 1 Office 116E

مدينة الكويت - مجمع الصالحية - مدخل 5 - الدور الاول - مكتب E 116

تليفون: 50403020

Email: m.awad@kuwaitgourmet.com

www.kuwaitgourmet.com

شركة كويت جورمية

kuwait Gourmet Company

لتجارة الجملة والتجزئة ومكاتب التصدير والإستيراد

For Wholesale and Retail Trade And Export and Import Offices

المعرض - Showroom

Shuwaikh Industrial Area 3 - Block D- Street 62 - Plot 40

الشويخ الصناعية ٣ - قطعة د - شارع ٦٢ - قسيمة ٤٠

تليفون: 55331620

Email: info@kuwaitgourmet.com

www.store.kuwaitgourmet.com

Vormh

SILICONE MOLDS

Silicon Mould



Happy Birthday 150mm

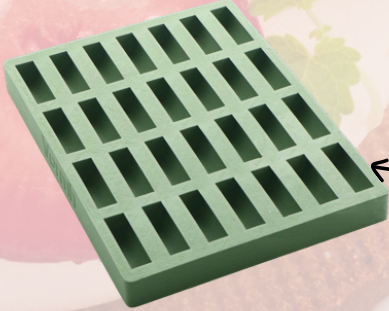
Code: OG-005-D22

Mother 150mm



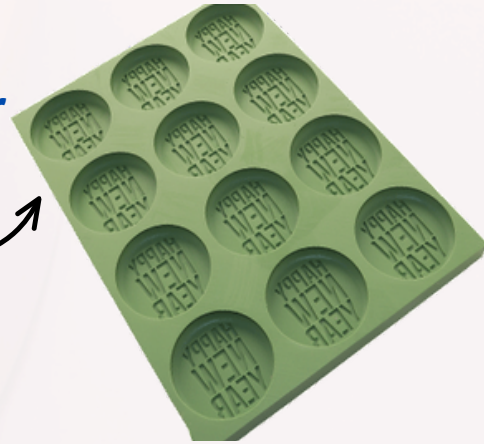
Code: FG5-001-V22

Tube 50x22mm 28pcs



Code:SV-032-V25

Happy New Year
12x60mm



Code: FK1-001

Chocolate stamps set
"Stripes & Spheres"



Code: SV-042-V25

Head Office - المكتب الرئيسي -

Kuwait City, Salhiya Complex - Enter-5, Level 1 Office 116E

مدينة الكويت - مجمع الصالحية - مدخل 5 - الدور الاول - مكتب E 116

تليفون: 50403020

Email: m.awad@kuwaitgourmet.com

www.kuwaitgourmet.com

شركة كويت جورمية

kuwait Gourmet Company

لتجارة الجملة والتجزئة ومكاتب التصدير والإستيراد

For Wholesale and Retail Trade And Export and Import Offices

المعرض - Showroom

Shuwaikh Industrial Area 3 - Block D- Street 62 - Plot 40

الشويخ الصناعية ٣ - قطعة د - شارع ٦٢ - قسيمة ٤٠

تليفون: 55331620

Email: info@kuwaitgourmet.com

www.store.kuwaitgourmet.com

Silicone Molds



The more you know and explore, the more you can create. With BlackSil, the imagination never ends.

The BlackSil line was born from the close collaboration between Martellato designers and world champion Frank Haasnoot to ensure unprecedented levels of excellence. Trust Martellato's black silicone, Made in Italy.



Martellato



30SF001



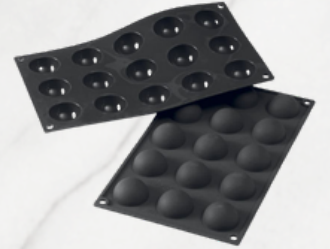
30SF002



30SF003



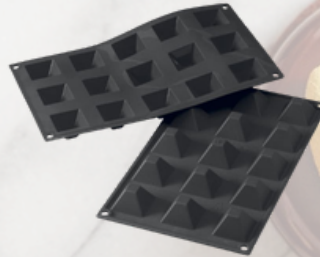
30SF004



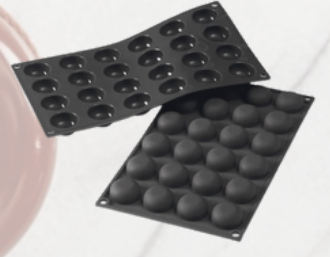
30SF005



30SF006



30SF008



30SF009



30SF010



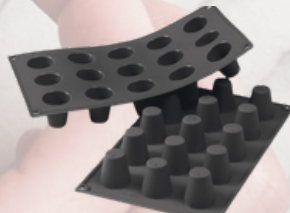
30SF013



30SF014



30SF017



30SF019



30SF025

المكتب الرئيسي - Head Office

Kuwait City, Salihiya Complex - Enter-5, Level 1 Office 116E

مدينة الكويت - مجمع الصالحية - مدخل 5 - الدور الاول - مكتب E 116

تليفون: 50403020

Email: m.awad@kuwaitgourmet.com

www.kuwaitgourmet.com

شركة كويت جورمية

kuwait Gourmet Company

لتجارة الجملة والتجزئة ومكاتب التصدير والإستيراد

For Wholesale and Retail Trade And Export and Import Offices

المعرض - Showroom

Shuwaikh Industrial Area 3 - Block D - Street 62 - Plot 40

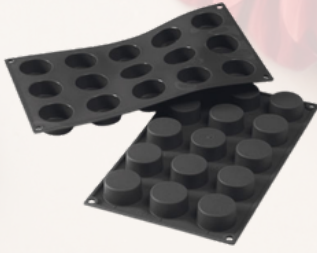
الشويخ الصناعية ٣ - قطعة د - شارع ٦٢ - قسيمة ٤٠

تليفون: 55331620

Email: info@kuwaitgourmet.com

www.store.kuwaitgourmet.com

Silicone Molds



30SF027



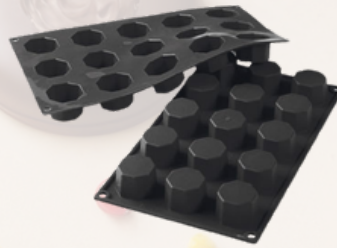
30SF029



30SF030



30SF031



30SF037



30SF033



30SF044



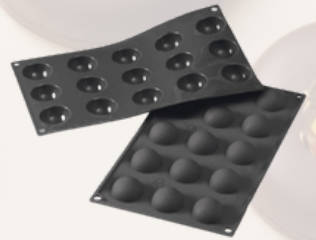
30SF048



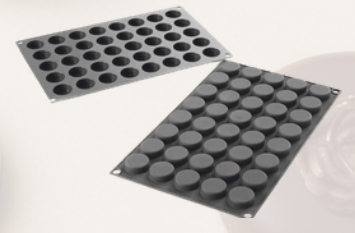
30SF502



30SF161



30SF500



30SF180



30SF502



30SF501



Martellato

المكتب الرئيسي - Head Office

Kuwait City, Salhiya Complex - Enter-5, Level 1 Office 116E

مدينة الكويت - مجمع الصالحية - مدخل 5 - الدور الاول - مكتب E 116

تليفون: 50403020

Email: m.awad@kuwaitgourmet.com

www.kuwaitgourmet.com

شركة كويت جورمية

kuwait Gourmet Company

لتجارة الجملة والتجزئة ومكاتب التصدير والإستيراد

For Wholesale and Retail Trade And Export and Import Offices

المعرض - Showroom

Shuwaikh Industrial Area 3 - Block D- Street 62 - Plot 40

الشويخ الصناعية ٣ - قطعة د - شارع ٦٢ - قسيمة ٤٠

تليفون: 55331620

Email: info@kuwaitgourmet.com

www.store.kuwaitgourmet.com



كويت جورمييه
kuwait Gourmet

Shop Your Favourite

HELLO
WELCOME
GOURMET

Shop for your favorite ingredients and get the
experience of preparing what you love.

تسوق مكوناتك المفضلة، واحصل على تجربة
إعداد ماتحب

شركة كويت جورمية

kuwait Gourmet Company

لتجارة الجملة والتجزئة ومكاتب التصدير والإستيراد

For Wholesale and Retail Trade And Export and Import Offices

✉ Info@kuwaitgourmet.com

🌐 www.kuwaitgourmet.com

☎ +965 50403020



ORDER NOW:

+965 55331620

www.store.kuwaitgourmet.com

Shop Now Your Favorite ingredients

We always strive to find the best
products and offer them to you.

نسعى دائماً للبحث عن افضل
المنتجات وتقديمها اليكم



Gourmet



Quality



Innovation